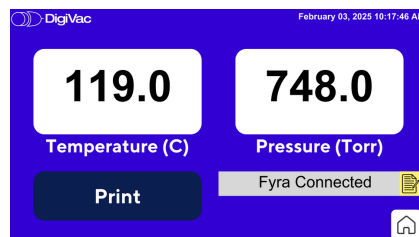
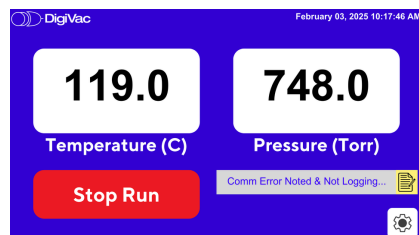
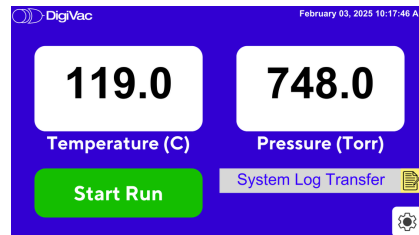
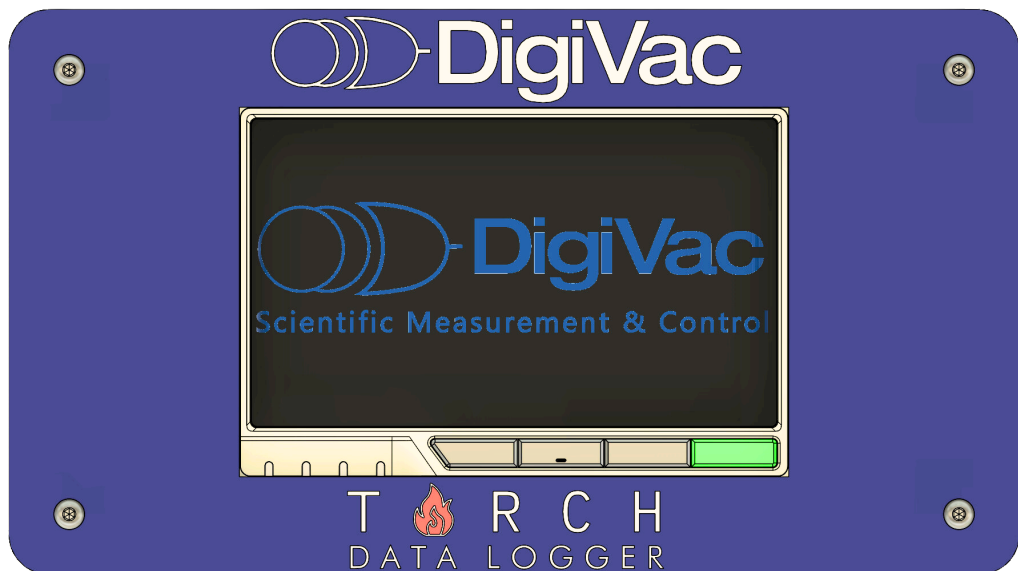


# T O R C H DATA LOGGER

[ DATA SHEET ]



## OVERVIEW

The Torch Data Logger is the answer to a simple data logging problem - the lack of temperature logging in addition to vacuum.

It is a straightforward data logger that can log both *temperature* and *vacuum/pressure* information, straight onto a USB flash drive for secure and easy portability.

With a 5" display that has touchscreen, the Torch Data Logger is made to have little to no human intervention.

## SPECIFICATIONS

<b>Power Supply</b>	AC Power Adapter
<b>Display</b>	5" LCD display 5-point capacitive touch
<b>Dimensions</b>	9.8" x 5.5" x 3"
<b>USB</b>	2 x USB (1 for printer, the other for thumb drive)
<b>Storage</b>	Internal Storage of 20G + USB Flash Drive Capacity
<b>Mount</b>	Magnetic or Benchtop

# T O R C H DATA LOGGER

[ DATA SHEET ]

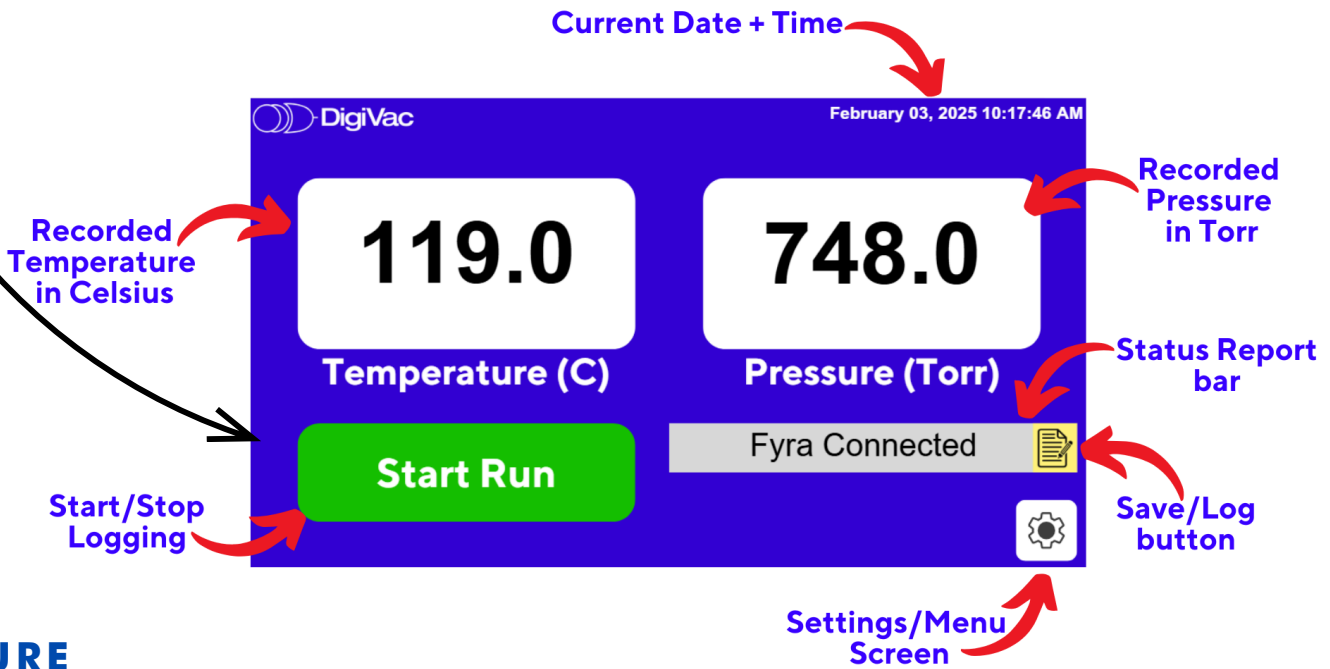
## SYSTEM

**LOG** date, time, vacuum and temperature

**COMPATIBLE** with excel as files are saved in .csv format

**SAVE** directly onto a USB flash drive and internal drive

**PRINT** data directly from the Torch to Bluetooth printer



## SECURE

**RESUME** logging data even in the event of a power outage

**RELIABLY** logs data to USB drive so logs have most up to date logging

**READABLE** only on USB device + file system to safeguard against tampering

**USB** ports located behind physical lock and key



## STRAIGHTFORWARD

**USB** port is located inside system's enclosure

**INITIALIZE** right into logging mode

**DISCOVERS** StrataVac/Fyra/SNAP port automatically

**VIEW** logged data on internal file system

