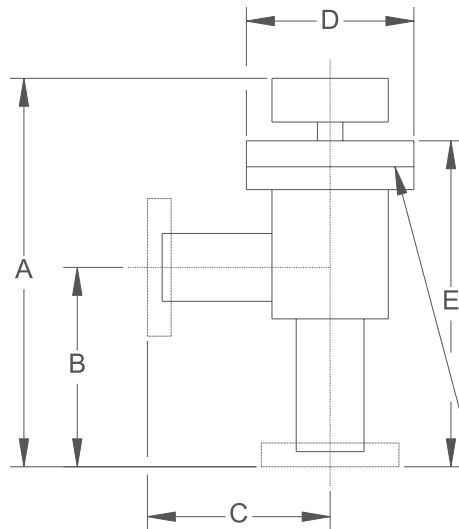


# Stainless Steel Valves

## Right Angle Valves, Stainless Steel, Manual, Viton® Bonnet and Poppet

Part Number	Tube OD	Port Style	A	B	C	D	E
SA-37-N	3/8"	Tube End	4.37	1.50	1.50	2.00	3.38
SA-37-K-N	3/8"	NW 10	4.50	1.65	1.65	2.00	3.54
SA-37-N-MS	3/8"	Mini MET-SEAL	4.20	1.56	1.56	2.00	3.38
SA-37-N-FVCR	3/8"	1/4" Female VCR®	4.75	1.87	1.87	2.00	3.75
SA-50-N	1/2"	Tube End	4.37	1.50	1.50	2.00	3.38
SA-50-K-N	1/2"	NW 16	4.50	1.65	1.65	2.00	3.54
SA-50-N-MS	1/2"	Mini MET-SEAL	4.20	1.56	1.56	2.00	3.38
SA-75-N	3/4"	Tube End	4.50	2.00	2.00	2.00	3.53
SA-75-K-N	3/4"	NW 16	4.68	2.12	2.12	2.00	3.66
SA-75-N-MS	3/4"	Mini MET-SEAL	5.00	2.50	2.50	2.00	4.03
SA-100-N	1"	Tube End	4.62	2.12	2.12	2.00	3.62
SA-100-K-N	1"	NW 25	4.80	2.25	2.25	2.00	3.78
SA-100-N-MS	1"	2-1/8" MET-SEAL	4.80	2.42	2.42	2.00	3.79
SA-150-N	1-1/2"	Tube End	5.43	2.25	2.25	2.75	4.04
SA-150-K-N	1-1/2"	NW 40	5.60	2.46	2.46	2.75	4.20
SA-150-N-MS	1-1/2"	2-3/4" MET-SEAL	5.64	2.46	2.46	2.75	4.50
SA-200-N	2"	Tube End	7.39	3.25	3.25	3.50	6.16
SA-200-K-N	2"	NW 50	7.55	3.50	3.50	3.50	6.32
SA-200-N-MS	2"	3-3/8" MET-SEAL	7.62	3.47	3.47	3.50	6.39
SA-250-N	2-1/2"	Tube End	10.80	3.25	3.25	4.00	7.75
SA-250-K-N	2-1/2"	NW 63	11.05	3.50	3.50	4.00	8.00
SA-250-N-MS	2-1/2"	4-1/2" MET-SEAL	11.20	3.62	3.62	4.00	8.12
SA-300-N	3"	Tube End	11.70	3.50	3.50	4.50	8.87
SA-300-K-N	3"	NW 80	11.95	3.75	3.75	4.50	9.12
SA-300-N-MS	3"	4-5/8" MET-SEAL	11.98	3.78	3.78	4.50	9.15



Viton® Bonnet

### Viton® Gasket Kits

Part Number	Fits Valve Series	Price
OR-SA-100-N	37,50,75,100	\$13.00
OR-SA-150-N	150	\$13.00
OR-SA-200-N	200	\$18.00
OR-SA-250-N	250	\$18.00
OR-SA-300-N	300	\$18.00

### Manual Bellows Assemblies

Part Number	Fits Valve Series
RS-B-100-N	37,50,75,100
RS-B-150-N	150
RS-B-200-N	200
RS-B-250-N	250
RS-B-300-N	300

