

[Ai SolventVap 2L Rotary Evaporator W/ Chiller & Pump 110V](#)

SKU | SE05-C15-DTC41



Technical Specifications

<p>Electrical requirements</p>	<p>110V 60Hz 1~phase, 1,340 watts (heater: 1,300 watts, rotation motor: 40 watts)</p>
<p>Glass material</p>	<p>High borosilicate glass 3.3</p>
<p>Evaporating flask</p>	<p>Capacity: 0.13 gallon (0.5L), 0.26 gallon (1L) or 0.53 gallon (2L) Maximum load: Not to exceed 60% of the flask's capacity Rotation speed: 10 to 280 rpm Evaporating speed: 20 ml per minute Lifting: weight balancing manual control</p>

	<p>with lock</p> <p>Max lifting distance: 4 inches (extendable to 10 inches)</p>
Receiving flask	0.26 gallon (1L)
Condenser	<p>Glassware: Vertical with dual-spiral glass tubing</p> <p>Chilling fluid connection: 3/8" hose barb x 2</p> <p>Vacuum connection: 3/8" hose barb x 1</p> <p>Condensing surface: 1,260 cm² or 1.4 sq ft</p>
Working environment	5 to 95F
Water bath	<p>Temperature range: ambient to 95C</p> <p>Temperature controller: digital</p> <p>Capacity: 6.5 L</p> <p>Material: stainless steel</p> <p>Dimensions: 10" diameter x 5" depth x 9.75" height</p> <p>Media: distilled water only</p> <p>Max. water level: not to exceed 1" from the top rim of the bath</p> <p>Number of heaters: one</p>
Vacuum	<p>Connection: 3/8" hose barb x 1 (on condenser)</p> <p>Sealing: PTFE + Viton gaskets</p> <p>Ultimate vacuum: < 3 torrs</p>
Safety	Dry-run, over-temp shut-off, fuse protections
Weight & dimensions	<p>Unit vs shipping:</p> <p>Rotary evaporator: 21 / 40 Lb</p> <p>Rotary evaporator: 22 x 12.5 x 26" / 26 x 21 x 29" (WxDxH)</p>
Warranty	One year warranty on rotary evaporator except glassware and all sealing gaskets.

Glassware may have minute blemishes that will not affect the function.
If you believe there are imperfections on your glassware, please contact us.
We check all our inventory and make sure no defective glassware is sent to our customers.

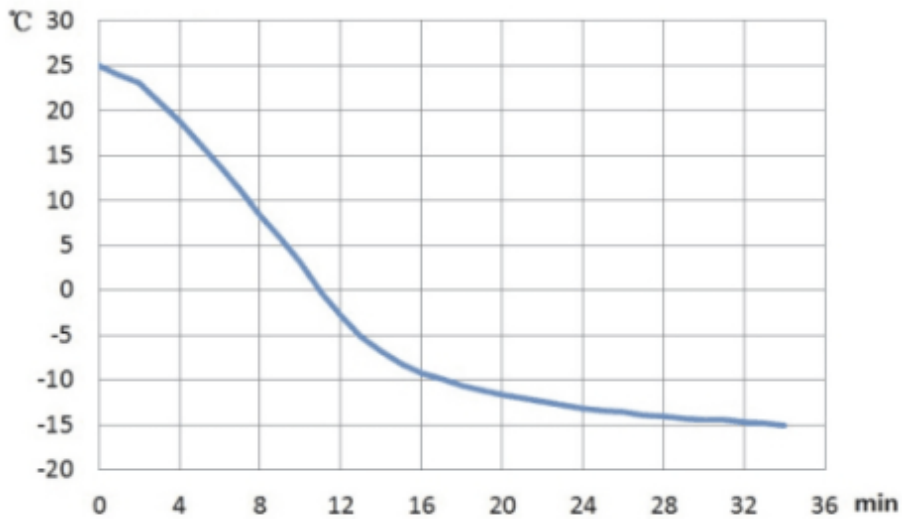
Compliance

ETL tested to UL and CSA standards

Pump Curves

C15-3 Pump Curve

Cooling media: ethanol



C15-3 Pump Curve

Cooling media: water

