



# Connection, DN 10 ISO-KF

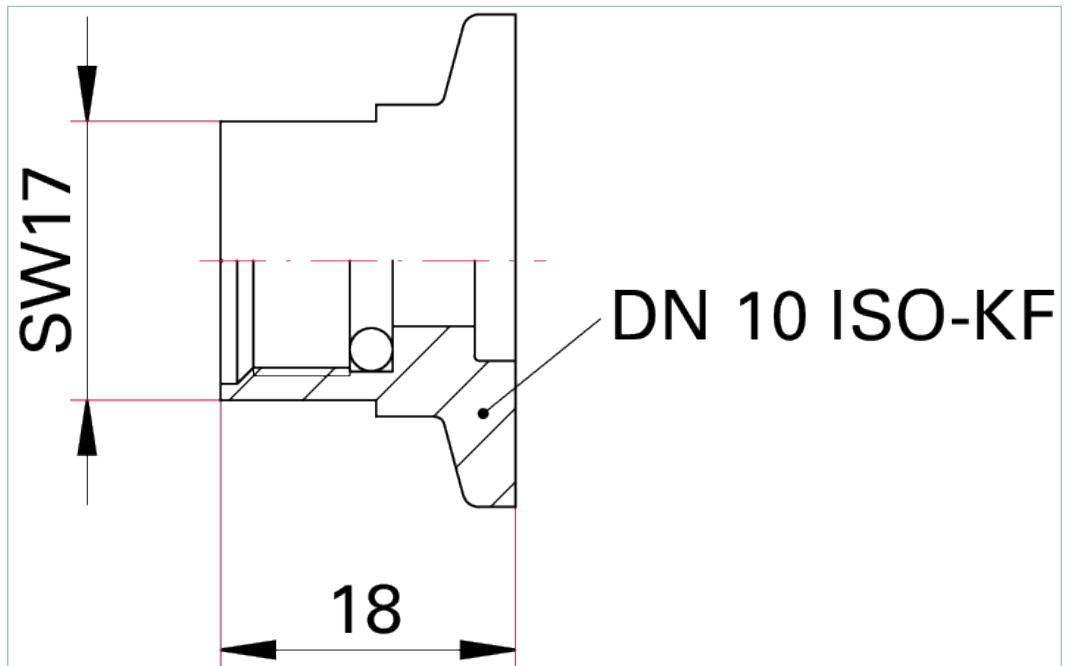
## Connection, DN 10 ISO-KF



Similar Image

- Accessory for mini angle valves, mini inline valves and gas regulating valve RME
- DN 10 ISO-KF

### Dimensions



Technical Data	Connection, DN 10 ISO-KF
Nominal diameter	DN 10 ISO-KF
Type	Mini angle valve

Order number	
Connection	PT 420 912-T

## **VACUUM SOLUTIONS FROM A SINGLE SOURCE**

Pfeiffer Vacuum stands for innovative and custom vacuum solutions worldwide, technological perfection, competent advice and reliable service.

## **COMPLETE RANGE OF PRODUCTS**

From a single component to complex systems:

We are the only supplier of vacuum technology that provides a complete product portfolio.

## **COMPETENCE IN THEORY AND PRACTICE**

Benefit from our know-how and our portfolio of training opportunities!

We support you with your plant layout and provide first-class on-site service worldwide.

Are you looking for a  
perfect vacuum solution?  
Please contact us:

**Pfeiffer Vacuum GmbH**  
Headquarters · Germany  
T +49 6441 802-0  
info@pfeiffer-vacuum.de

[www.pfeiffer-vacuum.com](http://www.pfeiffer-vacuum.com)

All data subject to change without prior notice.

**PFEIFFER**  **VACUUM**