



Operational Manual

YOU MUST READ THIS MANUAL BEFORE USE

NOVEMBER 2021

TABLE OF CONTENTS

Section 1: Overview	2
Section 2: Setup	3
Section 3: FAQ	7





StrataCapture

Overview:

StrataCapture is computer software that functions with the StrataVac and StrataVac Touch to transmit the controller's information directly to your desktop. With this software, you can view real-time graphs to determine how your system or pump is performing, and export that data for reference and analysis.

Features:

1. Logs time vs. vacuum to a local file on the computer
2. Connects to DigiVac's Cloud so system performance can be viewed from anywhere in the world
3. Allows users to record and save reports from system runs

Applications:

1. Document pump performance and baseline test results
2. Log data locally and on the Digivac cloud for sharing both real time and historical data

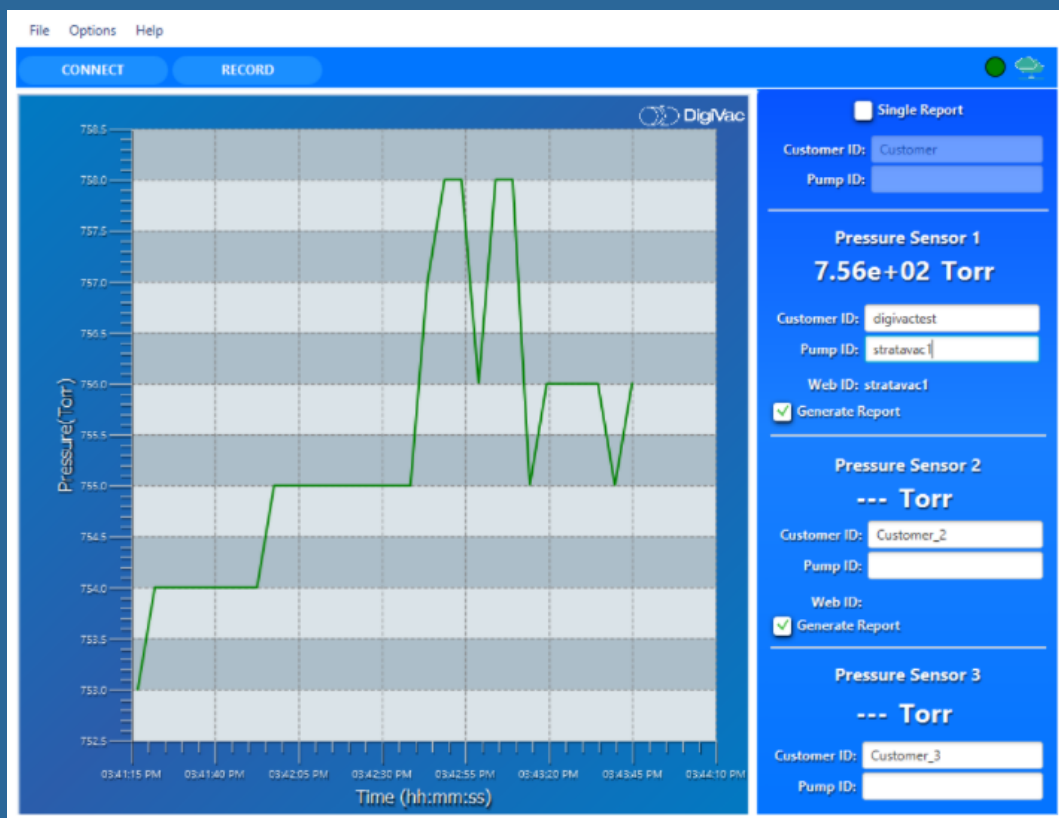
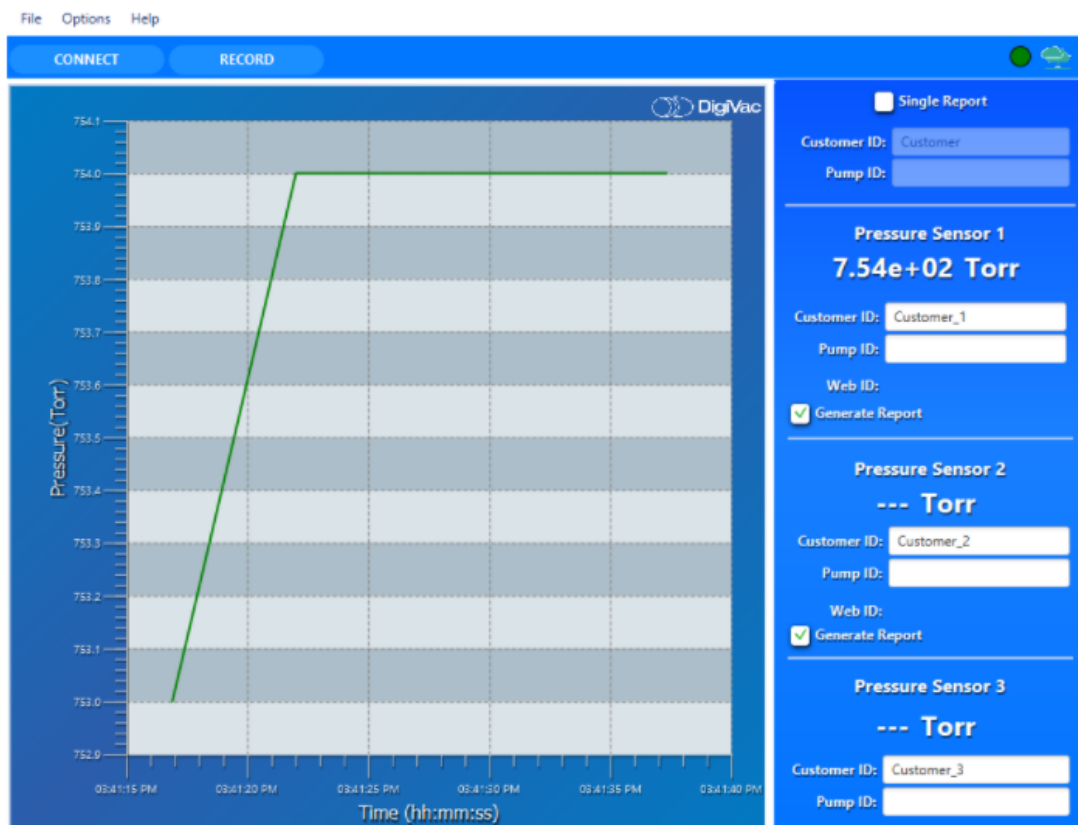
Use Cases:

1. Pump rebuilders who want to share pump performance data with their customers in a professional format with unique branding
2. Operations technicians and engineers who want an easy way to catalog pump and system vacuum performance so they can compare with current performance and assess maintenance needs
3. Technical staff who want to catalog their vacuum runs for R&D

SETUP:

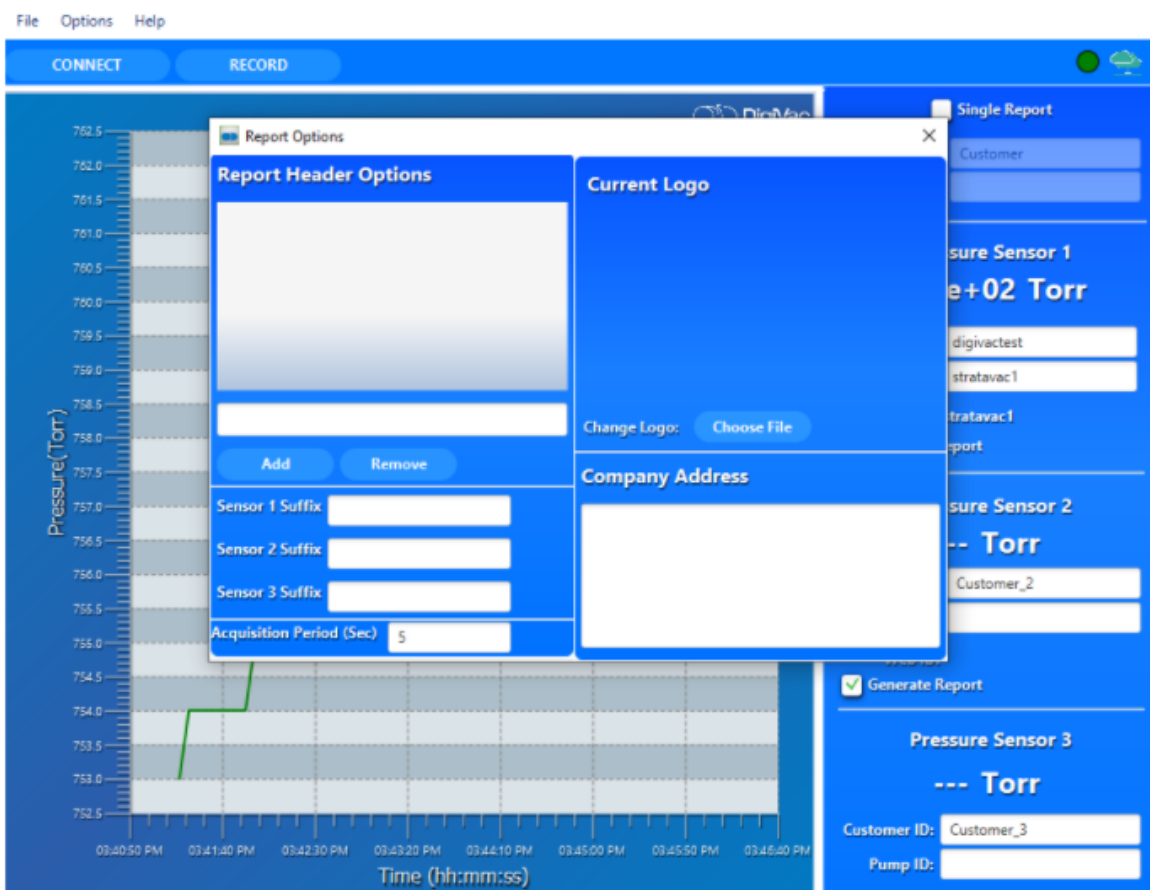
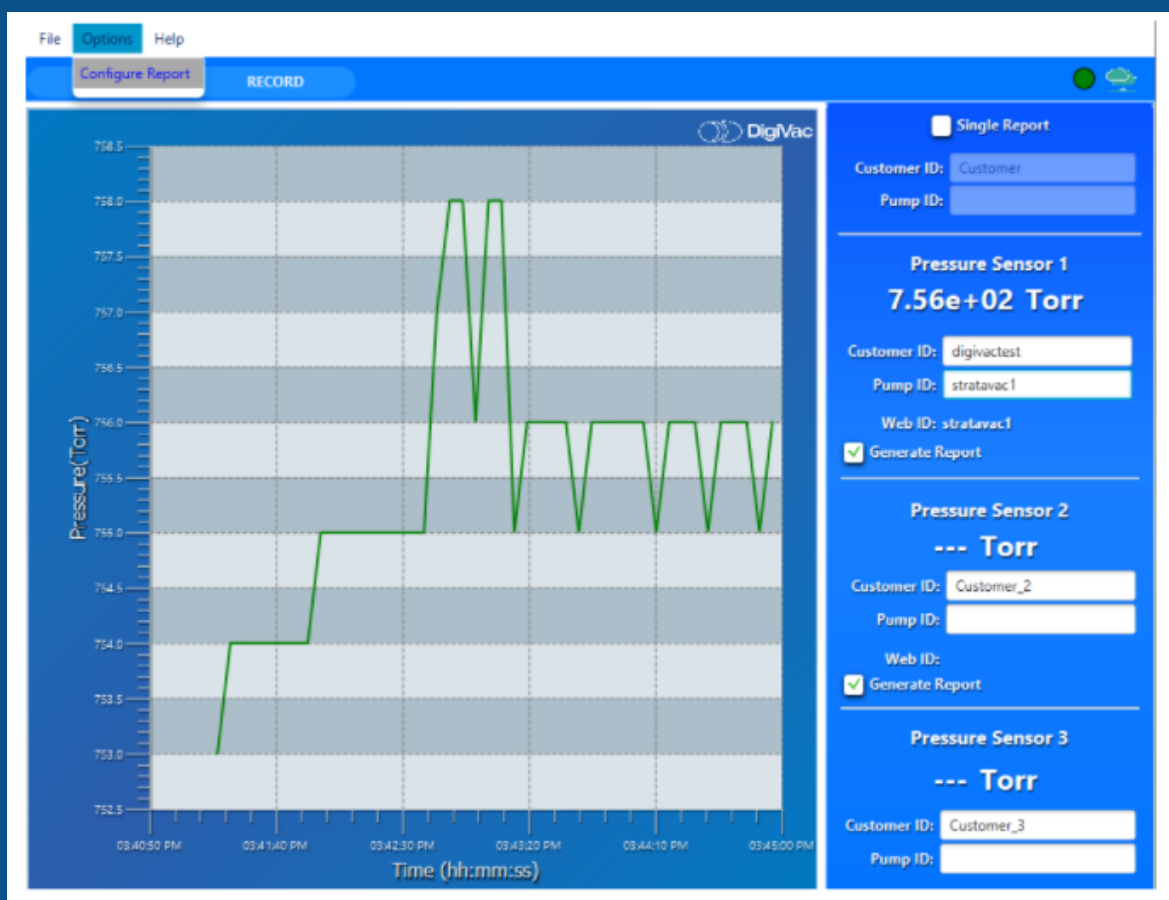
The StrataCapture software must be downloaded from www.digivac.com and will arrive in an email. Extract and install the program.

Open the program. Connect your instrument to your laptop or PC using a micro-USB-B cable and click Connect. The green light in the upper right corner will show that the gauge is connected.



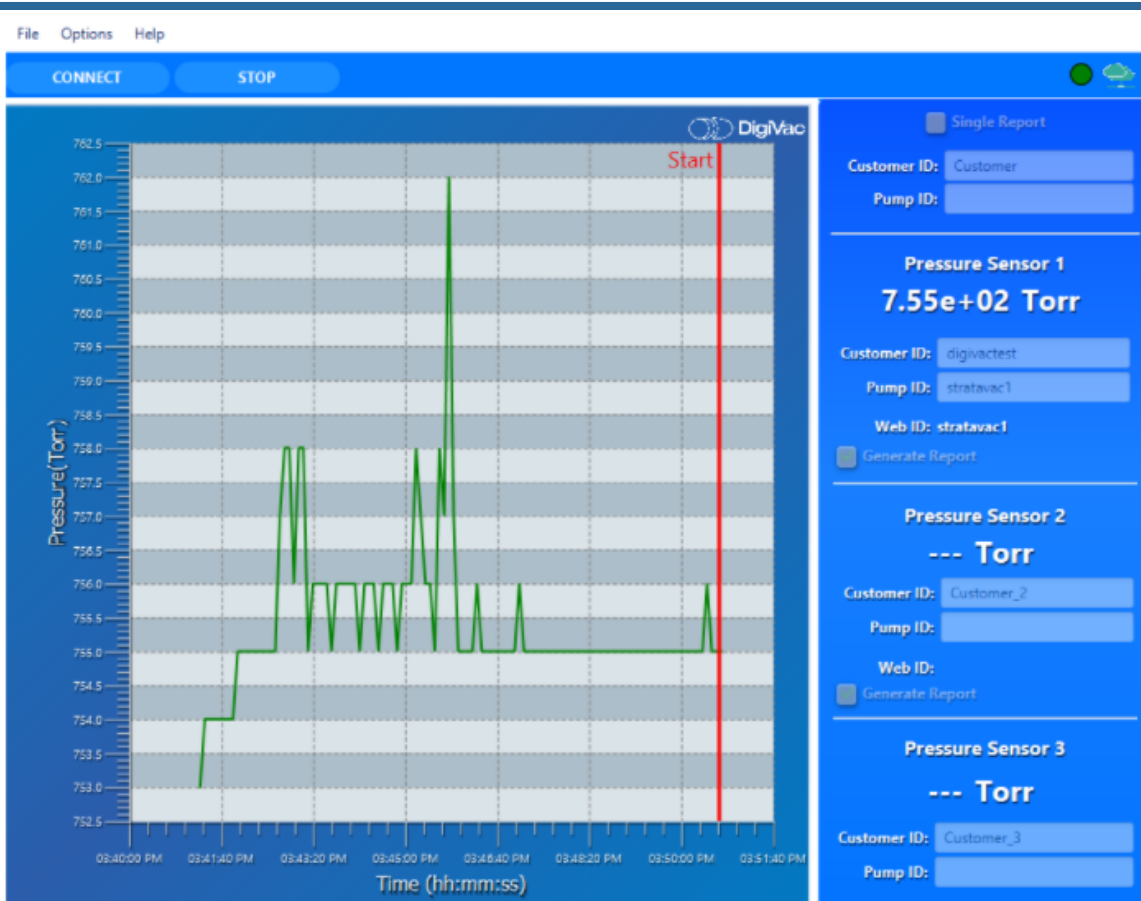
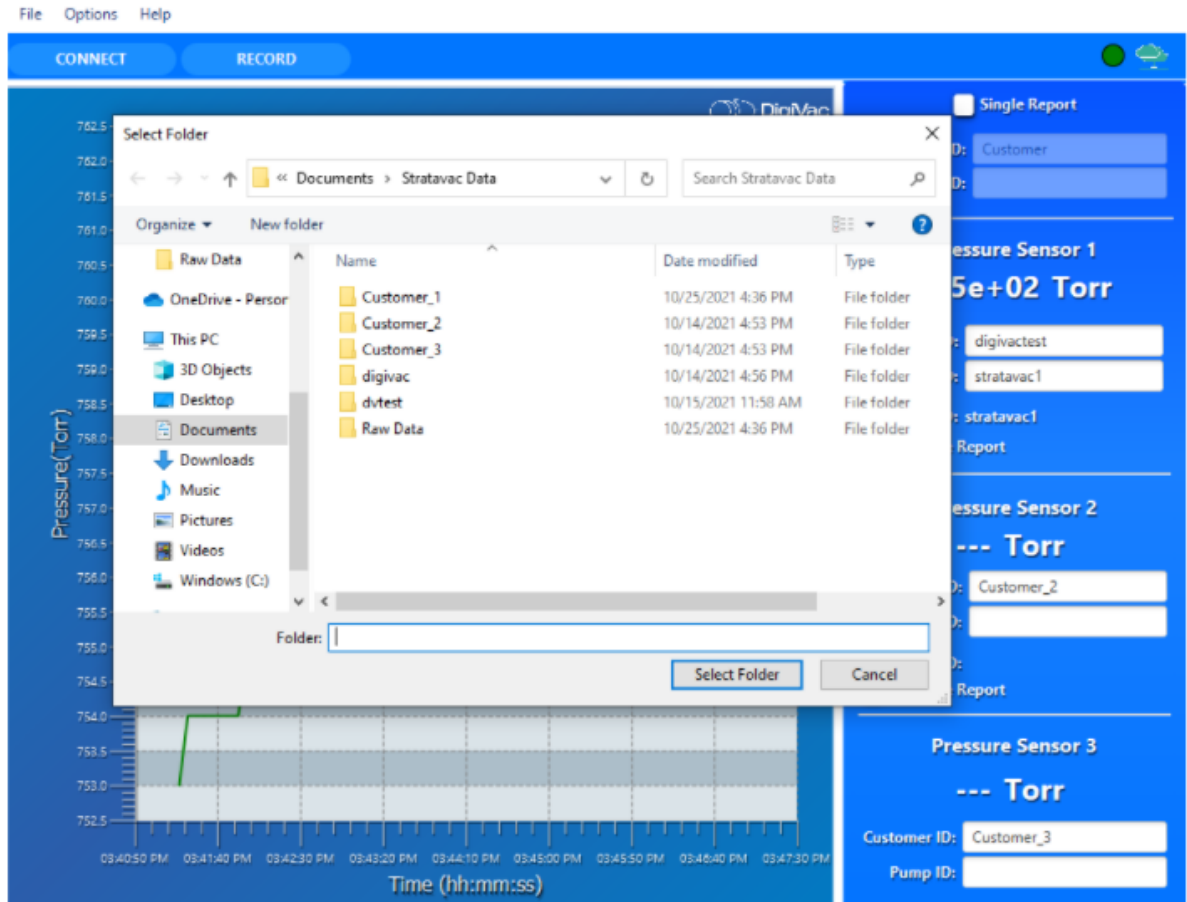
Assign each sensor a dedicated customer ID and a unique pump ID. You can also select whether you need individual sensor reports (each .csv file and pumpdown curve illustration shows the readings of the selected sensor only) or a single report (where the .csv file and pumpdown curve illustration show the behavior of all sensors connected to the gauge).

You must configure the report options before you start collecting data. Click Options > Configure Report.



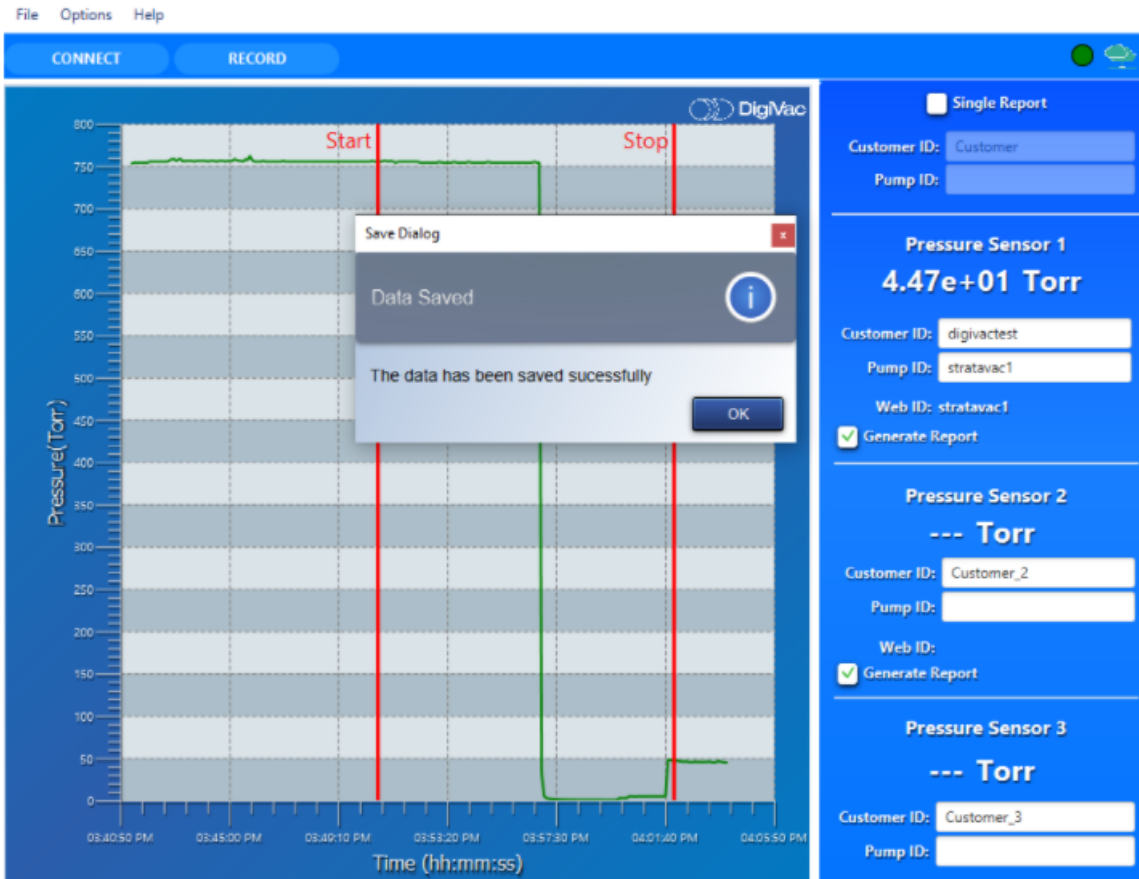
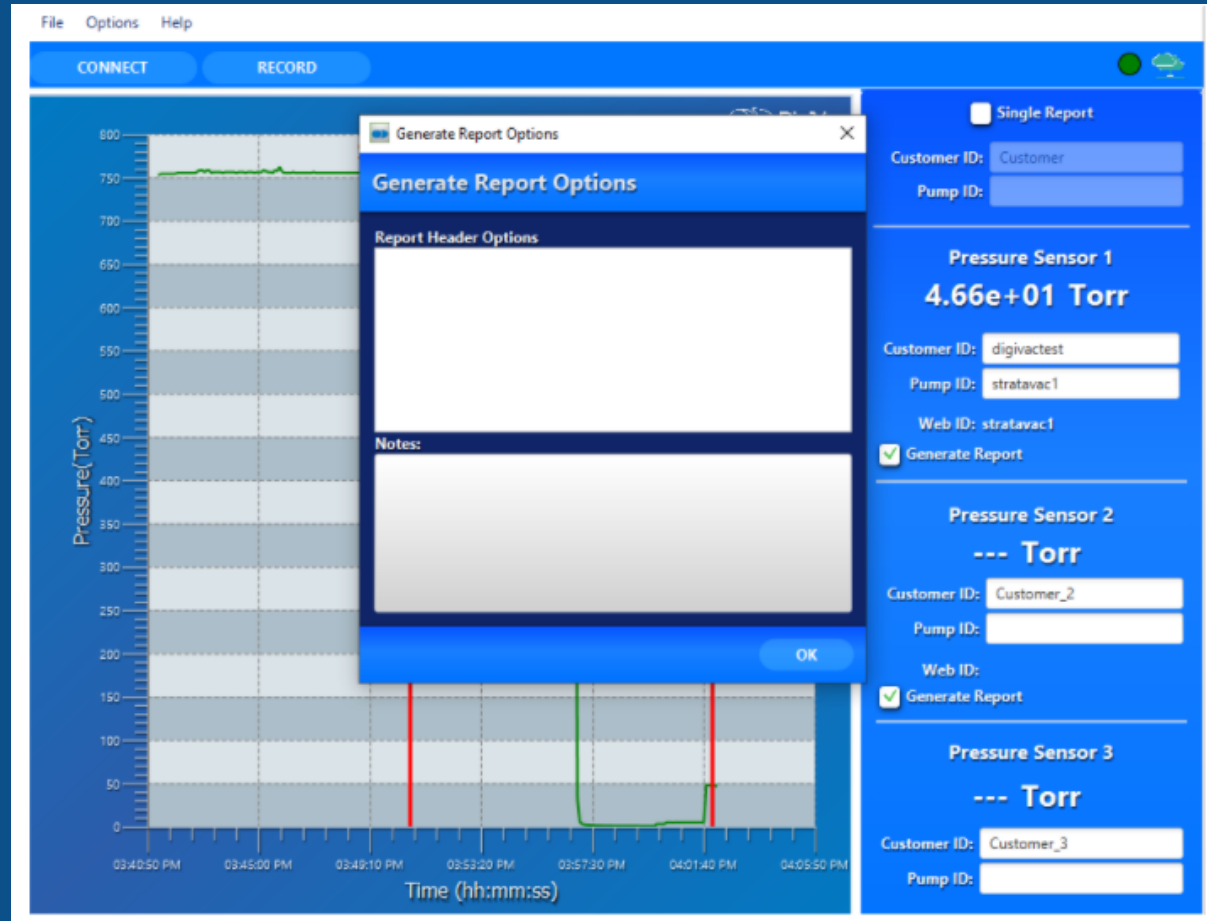
Here you can add options to the report such as a header, suffixes for the sensors, or a company logo or address.

Click File > Select Directory. You will be prompted to select a folder where the reports will save.



Click Record and a red line will show where the data collection starts.

When the time has elapsed, click Stop to save the data. You have the option to input additional report data here like a company header or notes.



Click OK and the data will be saved in the directory you selected during Report Configuration.

While your process is recording, you can go to vacuumnetwork.org, log in using the IDs created in StrataCapture and view your system readings live on your desktop, phone or tablet. When you stop recording, the live viewing of your system will cease

StrataCapture

Downloading Stratacapture:

When you are initially downloading the program you may run in to some pop ups that might confuse you.

- When first downloaded and you click to run Stratacapture, it will present you a "warning" you will click more info and then be provided the option to "run anyway" you'll will follow through.
- Once it ran completely, it doesn't automatically pop open, close your file explorer and on your Desktop home screen there will now be a stratacapture software icon. Once double-clicked it will run the software and be ready be used with the steps provided above.

**Note: When you are using this, you want to make sure your computer doesn't fall asleep during a logging run.*





StrataCapture

Optional Recording Features:

While the system is running, you can create a smart URL to share with your team. Rather than providing everyone with a login, you can simply send them a link to the live feed of the system. Information from the cloud is updated and recorded every 10 seconds.

To create a Smart URL:

1. Go to vacuumnetwork.org and use your customer ID and pump ID to log in
2. Open a new tab and type in [vacuumnetwork.org/?id=\(PUMPID\)](http://vacuumnetwork.org/?id=(PUMPID)) .
3. You can distribute this URL to anyone interested in observing the system in real time on any device.

To View data once your recorded session has ended:

1. Go to www.vacuumnetwork.org and use your customer ID and pump ID to log in
2. Scroll to the bottom of the page where it says "from" "to" and "Max Value"
3. Enter details into the boxes stated in step 2 (optional)
4. Click "submit" and begin viewing the full history of your system run