

Model 801

Model 801-AC

Pointer Meter Gauge Replacement

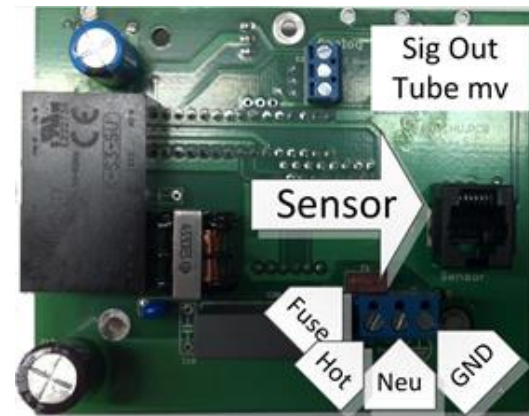


Specifications

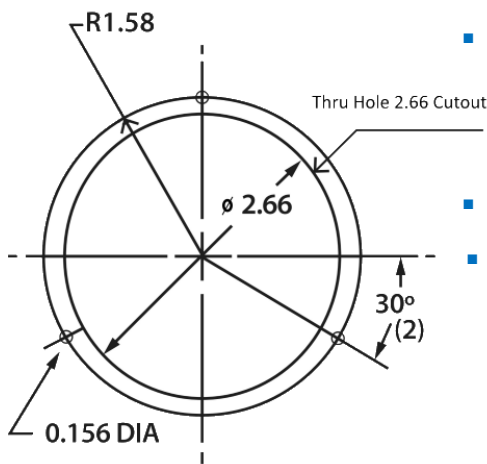
Vacuum Reference:	Absolute
Sensor:	Thermocouple/Varian 531
Temperature Range:	0°C - 50°C
Units:	Order as: Torr, microns, or mbar
Accuracy:	.001 - .010 Torr +/- .001 Torr .010 - 2.00 Torr +/- 10% of reading 2.0 - 760 Torr for reference only
Range	millitorr: 1 - 1999 microns Torr: 0.001 - 760 mbar: 0.001 - 999
Mount	Panel mounted
Display	0.5" high 3.5 digital red LED display
Shipping Dimensions	11" x 10" x 4"
Product Dimensions	4" x 3.25" x 1.7"
Power	110 - 240VAC, includes NEMA 5-15P
Compliance	RoHs CE with 536 tube, Radiation tested to 30K Rads

Features:

- Range of 0.001 – 760 Torr enables viewing pressure change of entire pumpdown
- Range with Accuracy of 1-2000 microns
- Circuitry features available in millitorr 1-2000 microns, Torr from 0.001 - 760, and mbar from 0.001-999



Model 801 Comparison



- **Similarities**—Uses same exact mounting pattern as classic Varian Model 801 pointer meter gauge and the same millivolt output and power requirements for F2739301 and F2739302
- **Lifespan**—Solid state electronics ensure long life
- **Circuitry**—electronics that improve electrical noise and immunity, while implementing tube protection circuitry to help mitigate sensor failures with the best repeatability and accuracy a 531 or 536 type thermocouple tube can deliver.
- **Calibrated**—Delivered pre-calibrated with an Agilent 531 sensor
- **Compatibility**—CE compliant with optional RoHS 536 tube

Options	Description
801-AC Torr	Base controller with 531
801 AC microns	That reads 1 - 1999 microns/millitorr
801-AC-mbar	Calibrated in millibar that reads 0.001 – 999 mbar
531-536	Option to upgrade sensor to a CE RoHs compliant 1/8" NPT 536
531 – 536 KF2S	Upgrades 531 sensor to CE RoHs compliant KF25 536