

MODEL 215 H

**Hastings based gauge controller -
Excellent response and repeatability
leveraging the DV-6M tube with
excellent data sharing options**

Specifications

Range	1-2000
Units:	microns, μ bar and Pa
Vac Interface:	1/8 inch MNPT or KF/NW
Sensor:	Hastings DV-6M
Sensor cable length:	10 feet
Display:	.56 inch high 4 Digit Red LED
Dimensions:	1.7" high, 3.52" wide, 5.35" deep
Analog output:	(if applicable): 0-5 VDC
Power:	100-240VAC 50/60 Hz CE rated
Controls:	7 Amp, 250 Volt (If Applicable)
Mounting:	1/8 DIN or Bench Top
Accuracy:	+/- 15%

Vacuum instrumentation with everything you need to go to work

Each vacuum gauge includes:

- A vacuum gauge controller
- A thermocouple vacuum gauge tube (vacuum sensor)
- A cable to connect the vacuum gauge controller to the thermocouple vacuum gauge tube
- An AC adapter that runs on 100-230VAC, 50/60 Hz with line cord adapter
- Pre-tested under actual vacuum against a NIST standard



Optional Features

Options Description

2C	The ability to control an external device via 2 SPDT external connections at user specified setpoints
5V5T	Provides a voltage output proportional to vacuum reading which ranges from 0-5 volts at 1mV per mTorr (1 micron = 1mV, 5 Torr = 5 Volts)
DS	Software which collects and graphs vacuum data on a PC via RS232 or Ethernet - requires RS232 or Eth option
Eth	Ethernet connectivity to allow remote monitoring and logging to a web browser with our included ReAct software
RS232	Enables vacuum reading to be logged to a PC or other device through a female DB9 interface
NISTCal	Calibration of a vacuum gauge against a NIST traceable standard with data

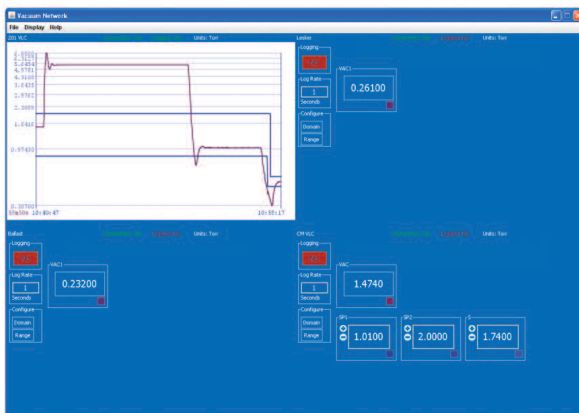


Model 215 H

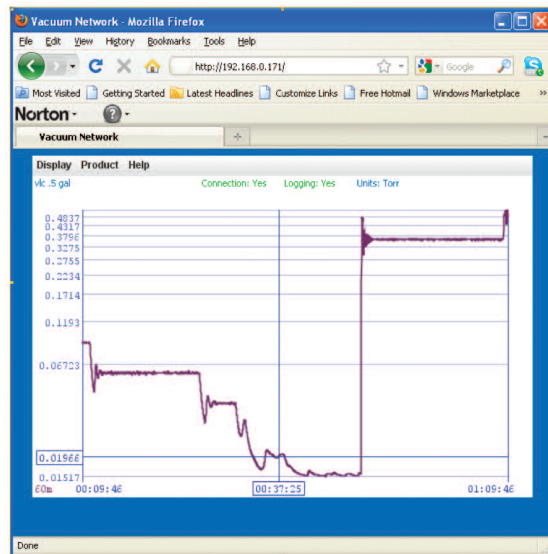
Can be accessed from across the hall
or across the planet when
configured with Ethernet



Multi-ReAct Software



ReAct Browser



The model 215 is our highly versatile instrument that leverages the industry standard Hastings DV-6M vacuum gauge tube. It measures vacuum from 1 millitorr to 2000 milliTor. In addition, it allows you to select the units displayed: either mtorr, ubar or Pa. This unit comes with optional Ethernet, RS232, or analog output for integration into a PLC or computer that will allow the user to remotely monitor the unit. The 215 also can be ordered with 2 SPDT relays with type C contacts. Not only are the controls easy to set with the large tactile front buttons, an LED is illuminated when the individual set points are activated. The set points are designed intelligently to turn on and off a solenoid in a hardwired fail-safe manner. If the tube burns out, dashes are displayed and the relays instantly move to their safe or high pressure atmospheric setting.

