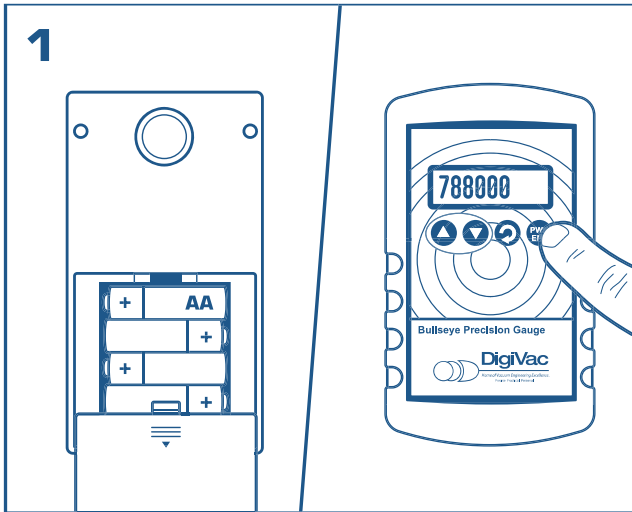


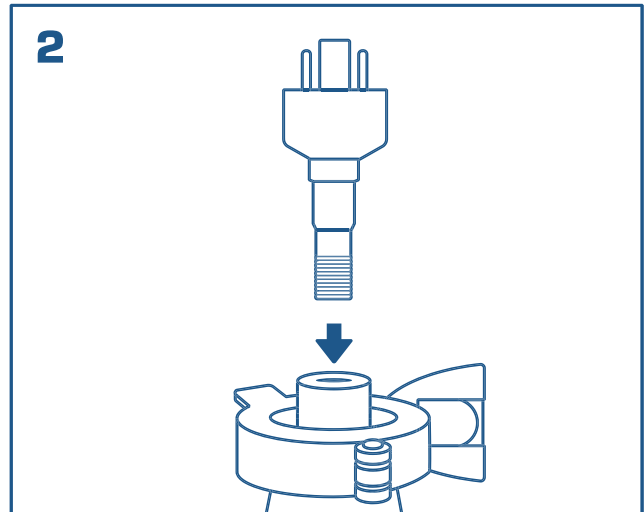
Quick Start Guide

**BULLSEYE
PRECISION
GAUGE**

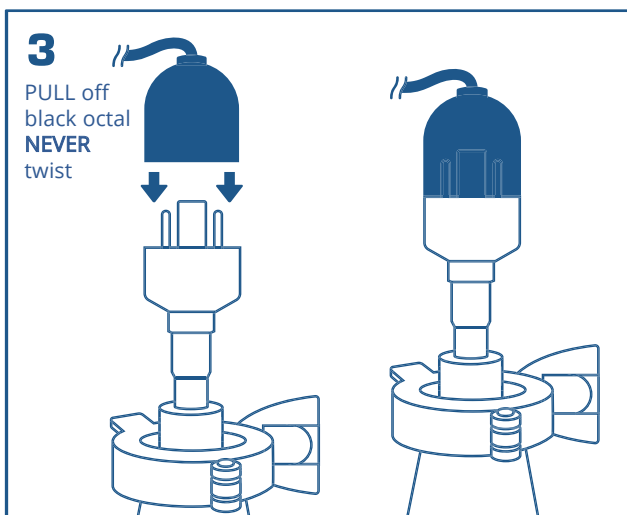


1
Install batteries or Connect to USB, press power button and verify that the display lights up

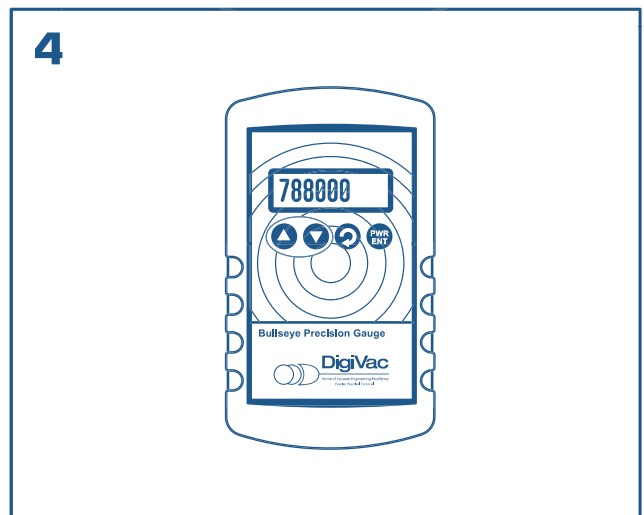
**NOTE: The USB is an additional option for external power, it won't charge the AAs.



2
Plumb the thermocouple gauge in your vacuum system, making sure to orient the sensor vertically so the threads are down. This is for best accuracy and long term reliability.



3
PULL off black octal
NEVER twist
Connect the octal end of the sensor cable to the vacuum sensor



4
Verify that the readings make sense