

DINAMO

Dual-Valve Module

Get More Flow With Dinamo!

Unique Dual Valve Design

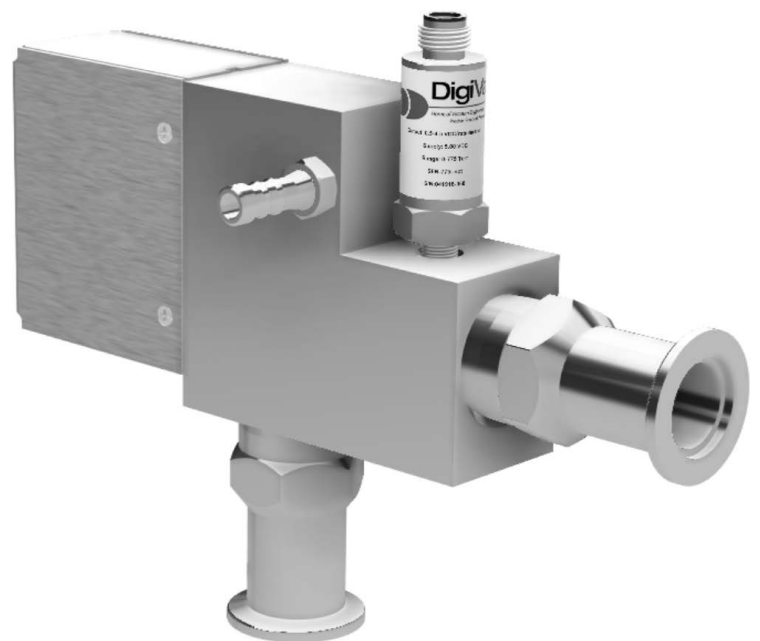
Twice the Control
Pipe in Dry Gas for Clean Venting
Low Power Consumption

Unmatched Precision Control

Novel Valve Design with High Flow and Fine Control
Regulate Chambers from 1 to over 100 Liters
Control at Deeper Vacuum Pressures

Unequaled Flow

Maximum Throughput
Faster Pump Down
Fast Venting



**SHORT PATH
DISTILLATION**



**WIPED FILM
EVAPORATION**



**SOLVENT
RECOVERY**

DINAMO

Dual-Valve Module

Unique Dual Valve Design

This novel dual valve design will make your vacuum operations much easier and quicker. The DINAMO Valve is very simple to set up and start using in less than a few minutes. The Dual-Valve DINAMO will reduce the amount of time you spend opening and closing multiple valves in different locations.

DigiVac device compatibility with StrataVac Touch

Applications

- **Solvent Recovery:** Rotary Evaporation, Falling Film
- **Rough vacuum control:** Seamless vacuum control 1 Torr to 760 Torr using a diaphragm pump or medium vacuum rotary vane pump
- **Process Vacuum Control:** Distillations, Schlenk lines, Vacuum drying



SPECIFICATIONS

Range of control

10 millitorr to 775 Torr
(depending on sensor choice)

Accuracy, control

+/- 5% of reading

Time to converge within 5% after disturbance

<30 seconds

Integral sensor choices

SEN-775i, SEN-536-NPT

SEN-775i Accuracy | Control Range

+/- 2 Torr | 2-775 Torr

SEN-536-NPT Accuracy | Control Range

+/- 15% | 10 millitorr to 6 Torr

Power

4 wire unipolar stepper drive

Enclosure

Open

Valve orifice sizes

Vacuum side: Min orifice of 20mm
Bleed side: Min orifice of 1/4 inch

Get More Flow With Dinamo!